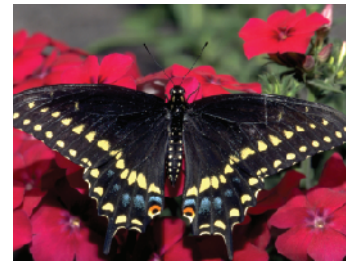


Common Texas Butterflies

Texas is home to more than 400 species of butterflies. Use this guide to become familiar with some of the more common species in the Lone Star State and check off the ones you encounter during your visit to the Butterfly Garden.



○ Reakirt's Blue *Hemiargus isola*



○ Black Swallowtail *Papilio polyxenes*



○ Texas Crescent *Phyciodes texana*



○ Great Purple Hairstreak *Atlides halesus*



○ Pipevine Swallowtail *Battus philenor*



○ Queen *Danaus gilippus*



○ Long-tailed Skipper *Urbanus proteus*



○ Gulf Fritillary *Agraulis vanillae*



○ Dainty Sulphur *Nathalis iole*



○ Red Admiral *Vanessa atalanta*



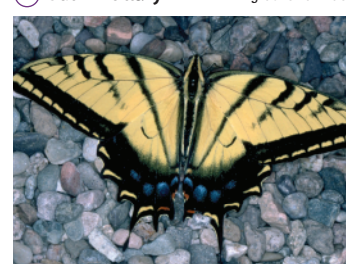
○ Hackberry Emperor *Asterocampa celtis*



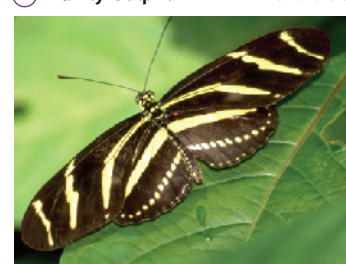
○ American Snout *Libytheana carinenta*



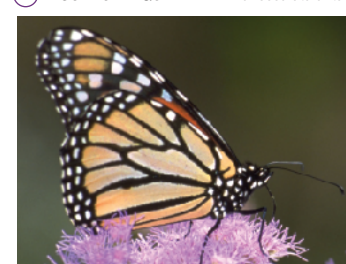
○ Southern Dogface *Colias cesonja*



○ Two-Tailed Swallowtail *Papilio multicaudata*



○ Zebra Longwing *Heliconius charithonia*



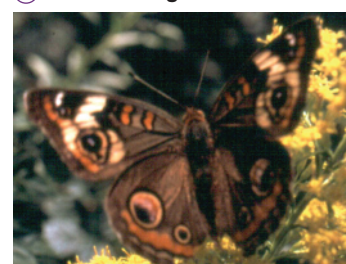
○ Monarch *Danaus plexippus*



○ Goatweed Leafwing *Anaea andria*



○ Variegated Fritillary *Euptoieta claudia*



○ Buckeye *Junonia coenia*



○ Giant Swallowtail *Papilio cresphontes*



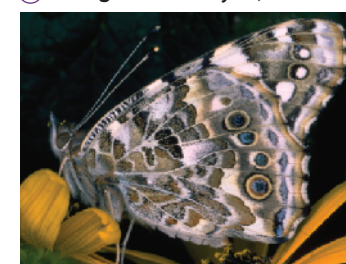
○ Cloudless Sulphur *Phoebis sennae*



○ Mourning Cloak *Nymphalis antiopa*



○ Common Wood-nymph *Cercyonis pegala*



○ Painted Lady *Vanessa cardui*

Larval Food Plants

Female butterflies lay their eggs on host plants that will provide food for the larvae or caterpillar. Some caterpillars may feed on only one or two larval foods. For example, Monarch caterpillars eat the leaves of milkweeds.



○ Butterfly-weed *Asclepias tuberosa*



○ Bracted passionflower *Passiflora affinis*



○ Texas ash *Fraxinus texensis*



○ Hop tree *Ptelea trifoliata*



○ American-water-willow *Justicia americana*



○ Wild-petunia *Ruellia nudiflora*



○ Milkvine *Matelea reticulata*



○ Cedar-elm *Ulmus crassifolia*

Nectar Plants

Butterflies can be attracted to your garden by providing suitable flowers from which they can obtain nectar. Most butterflies can utilize a wide variety of flowers, including those central Texas natives shown below.



○ Buttonbush *Cephalanthus occidentalis*



○ Drummond's-phlox *Phlox drummondii*



○ Purple coneflower *Echinacea purpurea*



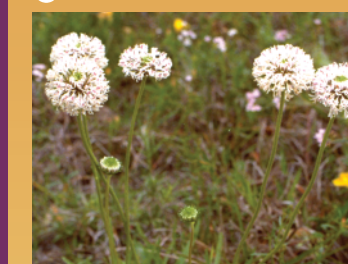
○ Black-eyed-Susan *Rudbeckia hirta*



○ Texas lantana *Lantana urticoides*



○ Woolly-ironweed *Vernonia lindheimeri*



○ Barbara's buttons *Marshallia caespitosa*



○ Shrubby boneset *Ageratina havanensis*



Lady Bird Johnson

Wildflowercenter



16

THE ANN & O.J. WEBER
Butterfly Garden

Photographer Credits

Butterfly Guide: Bill Draker, Campbell and Lynn Loughmiller, Kathy Adams Clark, Joe Marcus, John and Gloria Tveten and Larry Ditto

Front Cover: Gulf fritillary (*Agraulis vanillae*) by Kathy Adams Clark