



# NATIONAL WILDFLOWER RESEARCH CENTER

# Wildflower

January/February 1997

Volume 14, Number 1

## Why Use Native Plants?

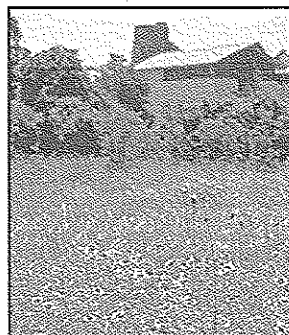
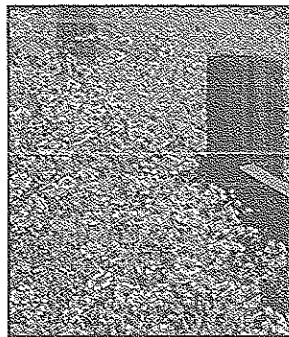
Human activity, such as farming, ranching, urban development, and chemical application, has significantly reduced many native plant communities. The loss of these communities has led to species loss and endangered natural habitats, caused soil erosion, and reduced the diversity necessary for stable ecosystems.

These problems are compounded when native plants are replaced with non-native species in landscape plantings. Non-native species often require large amounts of water, fertilizer, and herbicides for their maintenance. Some of these introduced plants escape cultivation and become aggressive weeds.

Native plants, on the other hand, are adapted to the particular

combination of soil, temperature, nutrients, and rainfall of their region. Once established, they require little, if any, supplemental water, fertilizer, pesticides, or other chemicals. Even in planned landscapes around homes, commercial developments, or roadsides, native plants require fewer additional resources. Using native plants in a garden or landscape can provide economic, ecological, and aesthetic benefits through reduced energy costs, enhanced ecosystem stability, and natural beauty – a win, win, win situation for the gardener and the natural community.

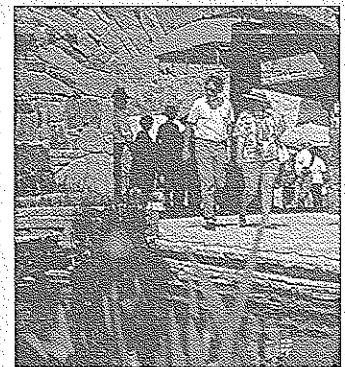
*This article is available as an educational hand-out. For a copy, call (512) 292-4200.*



## Wildflower DAYS FESTIVAL

*April 12 and 13*

Mark your calendars and find the easiest route to Austin! The nation's premier wildflower festival is scheduled for April 12 and 13, from 10 a.m. to 6 p.m. The annual Wildflower Days Festival at the



National Wildflower Research Center offers a riot of color for members, botanists, kids, gardeners, native plant lovers, landscape

*read on page 3*

# A Salute to Hard Working Volunteers

I always tell people I have the *best* job in Austin because the Wildflower Center is home to the best volunteers in Central Texas! Enthusiastic, friendly, and willing to go above and beyond the call of duty, our 300-plus "unpaid staff" keep the Center running. Volunteers usually work a three-hour shift once a week conducting guided tours, acting as sales associates in the gift store, tending ever-changing gardens, answering questions through our Clearinghouse, and many other helpful tasks. Some have been pressed into emergency bussing of tables in our cafe when crowds are overwhelming!

The Center's volunteers range in age from 15 to 87, and are required to attend a general orientation followed by exten-

sive, specialized training suited to each work site. We are particularly proud to have the support of area high schools, whose students come to the Center Saturdays to help in the gardens as part of their community service requirements.

The Center's Volunteer Department will host an outstanding conference this September: INTERaction '97. INTERaction is a biennial international conference for volunteers and volunteer managers working in garden settings. Participants will come to the Center for three days of networking, inspirational speeches, and useful information. If you know someone who might enjoy the conference, ask them to contact me at (512) 292-4200 ext. 102.

Are you wondering how you might help further the mission of the Wildflower Center as a volunteer? Consider volunteering at a garden near you. You can request a list of reciprocal gardens and arboreta by calling (512) 292-4200 during the work week. Most gardens rely on volunteers for planting, weeding, helping with visitors, and gift store support. I think you will find great satisfaction working in a garden setting. Best wishes for a happy and rewarding year!



*Peggy Budd is the Director of Volunteer Services at the National Wildflower Research Center*

*The National Wildflower Research Center is a nonprofit research and educational organization committed to the preservation and reestablishment of native wildflowers, grasses, shrubs, trees, and vines in planned landscapes.*

Founder  
**Lady Bird Johnson**

Executive Director  
**David K. Northington, Ph.D.**

Editor  
**Joshua Blumenfeld**

Designer  
**Elaine Brown**

Copy Editors  
**Dyanne Cortez, Joseph Hammer**

Contributing Authors  
**Patricia Alholm, Lisa Brown, Tiffany Dockery**

*Wildflower* (ISSN 0898-8803) Published bimonthly. A portion of your membership dues pays for your annual subscription to *Wildflower*, National Wildflower Research Center, 4801 La Crosse Ave., Austin, TX 78739, (512) 292-4200. Material may be reprinted with editor's permission. Periodicals postage paid at Austin, TX.

POSTMASTER: Send address changes to *Wildflower*, NWRC, 4801 La Crosse Ave., Austin, TX 78739, (512) 292-4200.

© 1997  
Printed on recycled paper.

## NEWS! WILDFLOWER CENTER NEWS!

The Wildflower Center has been named one of America's best public gardens by *Garden Design* magazine. Thirty-four gardens were selected from thousands of candidates for this first annual hot list, and the Wildflower Center was the only garden chosen in Texas.

The American Society of Landscape Architects (ASLA) named the Wildflower Center and two of the project architects, Darrel Morrison and J. Robert Anderson, the recipients of a design award at the Society's annual meeting in Los Angeles. This recognition is of historical significance: it is the first time the Society has given an award to a native plant landscape project.

The *Wildflower* newsletter received the 1996 national Clarion award for best internal newsletter in the nonprofit category from the Women in Communications professional association. In addition, the Center's *Map &*

*Guide* was selected as the outstanding site publication in the nation by the National Association for Interpretation. (You won't see the latter unless you visit!)

Optical Data, an educational multimedia company with nationwide distribution, is producing a video for 4th graders focusing on Mrs. Johnson's contributions to the environment. The Center's rooftop rainwater harvesting system is prominently featured, and the Education Department is excited about reaching such a large audience.

The Rockwell Fund, Inc., provided a generous grant to continue the development of a series of site-specific educational brochures. The *Water Harvesting*, and *Buffalograss* brochures are immensely popular, and a *Bird Checklist* was just produced. Many thanks to the Rockwell Fund, Inc., for helping to provide educational tools to our visitors.

## WILDFLOWER DAYS

continued from page 1

architects – just about anyone you can think of! Named one of America's best public gardens by *Garden Design* magazine, the Wildflower Center features more than 500 species of plants native to the Central Texas Hill Country, many of which are spectacular in the spring.

Festival-goers can talk with gardening experts, tour the gardens, explore the nature trails, picnic in the shade, climb the Observation Tower, or simply stroll the grounds as the Wildflower Center celebrates another fabulous spring.

Nationally known speakers, authors, storytellers, and plenty of outdoor

demonstrations also will be part of this event. Booths with native plants and seeds for sale, arts and crafts with native plant themes, and many children's activities round out the fun.

If you've been looking for a good reason to come to Austin, consider this an invitation to visit during Wildflower Days at the National Wildflower Research Center. The Austin Convention and Visitors Bureau will be happy to provide information about Austin's hotels, restaurants, and attractions; you can call them at (800) 926-2282. Pack your bags, bring your camera, and join us for the Wildflower Center's annual celebration of spring, the environment, and the world of nature!



Carl Pingry  
There's fun for all at the Wildflower Days Festival!

# F *From the* F E L D

### NEW ENGLAND

**Framingham, MA:** *Plant Communities of New England*, January 13-February 10, Contact: Education Department, The Arnold Arboretum, 125 Arborway, Jamaica Plain, MA 02130, (617) 524-1718.

**Jamaica Plain, MA:** *Dormancy and Dessication: What Happens to Plants in Winter*, February 13, Contact: Education Department, The Arnold Arboretum, 125 Arborway, Jamaica Plain, MA 02130, (617) 524-1718.

### NORTHEAST

**New Brunswick, NJ:** *Stabilization and Restoration of Disturbed Sites*, January 29-30, Contact: Cook College Office of Continuing Professional Education, Box 231, New Brunswick, NJ 08903, (908) 932-9271.

**Brooklyn, NY:** *Friends and Enemies in Your Garden*, February 22, Contact: Department of Adult Education, Brooklyn Botanic Garden, 1000 Washington Ave., Brooklyn, NY 11225, (718) 622-4433.

**Buffalo, NY:** *More Old Growth Forest Remnants in Western New York*, January 14, Contact: Niagara Frontier Botanical Society, Buffalo Museum of Science, 1020 Humboldt Parkway, Buffalo, NY 14211, (716) 896-5200.

### SOUTHEAST

**Atlanta, GA:** *A Habitat Garden*, January 14, Contact: Georgia Native Plant Society, Box 422085, Atlanta, GA 30342, (770) 392-9650.

**Athens, GA:** *Wildflower Symposium*, January 29, Contact: The State Botanical Garden of Georgia, 2450 S. Milledge Ave., Athens, GA 30605, (706) 542-1244.

### TEXAS/OKLAHOMA

**Dallas, TX:** *Truly Texan Landscapes*, February 20, Contact: The Dallas Arboretum, Education Department, 8617 Garland Rd., Dallas, TX 75218, (214) 327-8263.

### MIDWEST

**Cedar Rapids, IA:** *Habitat Gardening with Iowa Native Plants*, February 1, Contact: Indian Creek Nature Center, 6665 Otis Road, SE, Cedar Rapids, IA 52403, (319) 362-0664.

### ROCKY MOUNTAIN

**Kalispell, MT:** *Meeting of the Flathead Chapter of the Montana Native Plant Society*, January 15, Contact: Kelsey, Attn: Tulli Kerstetter, Box 6444, Bozeman, MT 59771, (406) 857-2024.

## Tree Talk and Winter Walk

Believe it or not, there's a lot of plant life to see and enjoy in winter. Come to the Wildflower Center Saturday, January 11, for a fun-filled day of tree planting demonstrations, guided nature walks, gardening tips, and speakers. Take a guided stroll through the gardens at 10 a.m. and 1 p.m. with the Center's horticulturists to find out what you can do in your native plant winter garden. Then,

attend one of the tree planting demonstrations at 11 a.m. and 2 p.m., each followed by a tour led by tree experts. Join us for this look at all the things you can do with native plants in winter!



# Exercise Your Mind

*It might be too chilly to jog or swim laps, but a long winter night is the perfect time to curl up with a good gardening book. Don't forget to take your 10% member discount off the indicated prices! To order, use the form.*

**A Guide to Wildflowers in Winter: Herbaceous Plants of Northeastern North America**, Carol Levine. Unique guide to Northeastern nonwoody plants. 582 species, 391 illustrated with line drawings. Paperback. 327 pages. \$20.00.

**The Native Plant Primer: Trees, Shrubs, and Wildflowers for Natural Gardens**, Carol Ottesen. A comprehensive, practical, region-by-region gardener's guide-book. Lavishly illustrated with 500 color photographs. Hardback. 368 pages. \$50.00.

Use this form (or a copy) to order these books. Make check payable to NWRC and mail with this form to: NWRC Book Orders, 4801 La Crosse Avenue, Austin, TX 78739. Or call (512) 292-4300, Monday – Saturday, 9 a.m. – 5 p.m. (CT).

Book Title(s): \_\_\_\_\_

Total Price of Books: \_\_\_\_\_  
Less 10% Member Discount: \_\_\_\_\_  
Shipping (1-2 Books: \$3.50, 3+ Books: \$4.50): \_\_\_\_\_  
Texas Residents Add 6.25% Sales Tax: \_\_\_\_\_  
TOTAL: \_\_\_\_\_

Ship To:  
Name: \_\_\_\_\_ Phone: (\_\_\_\_) \_\_\_\_\_  
Street Address: \_\_\_\_\_  
City: \_\_\_\_\_ State: \_\_\_\_\_ ZIP: \_\_\_\_\_

**Pods: Wildflowers and Weeds in Their Final Beauty**, Jane Embertson. This lovely book focuses on a forgotten season. 450 color photographs show how to identify pods correctly and appreciate a faded flower. Paperback. 186 pages. \$18.00.

**Roadside Plants and Flowers: A Traveler's Guide to the Midwest and Great Lakes Area**, Marian S. Edsall. A quick and easy guide to more than a hundred roadside plants and flowers, each with a color photograph. Paperback. 143 pages. \$14.95.

## Don't Forget Your Membership Card!

When you visit the Wildflower Center, please have your membership card handy to show the gate attendant. If you need a replacement card, call the Membership Office at (512) 292-4200 ext. 126 two to three weeks prior to your visit. Thank you for your membership and participation!

After 12 talented and dedicated years with the Wildflower Center, we are sad to announce that Mae Daniller is stepping down as Director of Development. Mae started the national membership program, and has cultivated it to its current status as the second largest botanic garden membership in the country. Mae was key to the successful evolution of the Wildflower Center into a nationally acclaimed, award winning organization. Her creativity and commitment to excellence in all areas she directed – membership, fund development, special events, graphic design, marketing, public relations, gift store, cafe, facility rentals, and staff development – were crucial to our growth and success. She has had a major impact on nearly every phase of the Wildflower Center's history of accomplishment, and has truly been an unsung hero. We will miss her greatly.

*The staff of the NWRC*



NATIONAL WILDFLOWER RESEARCH CENTER  
4801 LA CROSSE AVENUE, AUSTIN, TEXAS 78739

Periodicals  
Postage Paid at  
Austin, Texas

- ✿ Membership Information, call (512) 292-4200
- ✿ *Wild Ideas: The Store*, call (512) 292-4300
- ✿ General Information, call (512) 292-4100



The Wildflower Center is a member of Earth Share of Texas.

## Grow Native!

Volume 14, Number 1 January/February 1997



Printed on recycled paper.